



Price list - September 2012

Prices in EURO €

Content

Duct heaters - electric

Page 3	Circular
Page 4	Circular
Page 5	Circular
Page 6	Circular
Page 6 -7	Rectangular
Page 10-11	Accessories

Modell

CV -MQU / -MQEM / -MQXL
CV - MTU / -MTEM / -MTXL
CV - M / -ML / -E / -R
CV - PTU / -PTEM / -PTXL / -P
VFL / VFLPG / VTL / VRA

Duct heaters / Duct coolers

Page 8	Circular duct heater for hot water
Page 8	Rectangular duct heater for hot water
Page 9	Circular duct cooler for cooled water
Page 9	Rectangular duct cooler for cooled water
Page 9	Rectangular duct cooler with DX-coil
Page 9	Accessories - droplet eliminator
Page 10-11	Accessories - others

CWW
PGV
CWK
PGK
PGDX
DE

Fan heaters - electric

Page 12	Portable/wall mounted for difficult environments
Page 13	Wall mounted for permanent heating
Page 13	Wall mounted for permanent heating
Page 13	Portable/wall mounted for temporary heating
Page 13	Portable for temporary heating
Page 13	Portable for temporary heating

ROBUST
EA
ENV
BX
EN
KX2

Fan heaters - hot water

Page 14	Permanently wall mounted
Page 14	Permanently ceiling mounted
Page 15	Accessories

AW
CAW

Dehumidifiers

Page 15	For professional use
Page 15	For basements, water damages etc
Page 15	For domestic use

LAF 50/100/150
LAF 30
LAF 10

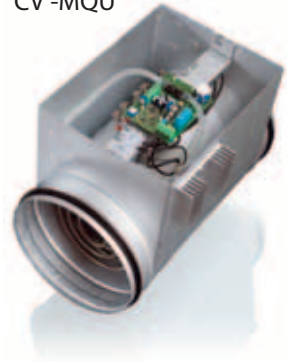
Terms of sales

Page 16	Terms of sales
---------	----------------

Electric duct heater CV -MQU / -MQEM / -MQXL
(built-in temperature regulator and electronic air flow monitor)
300 W - 12000 W

Type	Power W	Voltage V	For external or internal temperature setting		For external temp. set- ting min/max limitation		For external 0...10V control signal.	
			Model -MQU**		Model -MQEM***		Model -MQXL	
			Art. No.	Price	Art. No.	Price	Art. No.	Price
CV 10-04-1	400	230V~	200301	306	200201	329	200501	427
CV 10-06-1	600	230V~	200302	311	200202	334	200502	432
CV 12-03-1	300	230V~	200303	315	200203	339	200503	436
CV 12-06-1	600	230V~	200304	329	200204	354	200504	451
CV 12-09-1	900	230V~	200305	344	200205	367	200505	464
CV 12-12-1	1200	230V~	200306*	352	200206	375	200506	473
CV 12-15-1	1500	230V~	200307	365	200207	391	200507	487
CV 12-18-1	1800	230V~	200308	383	200208	406	200508	503
CV 16-03-1	300	230V~	200309	328	200209	353	200509	449
CV 16-06-1	600	230V~	200310	328	200210	353	200510	449
CV 16-09-1	900	230V~	200311*	345	200211	369	200511	467
CV 16-12-1	1200	230V~	200312	358	200212	381	200512	479
CV 16-15-1	1500	230V~	200313	361	200213	398	200513	482
CV 16-18-1	1800	230V~	200314	361	200214	398	200514	482
CV 16-21-1	2100	230V~	200315*	370	200215	395	200515	493
CV 16-27-1	2700	230V~	200316	393	200216	416	200516	514
CV 16-33-2	3300	400V2~	200317	410	200217	435	200517	532
CV 16-50-2	5000	400V2~	200318	464	200218	488	200518	585
CV 16-50-3	5000	400V3~	200319	669	200219	669	200519	767
CV 20-06-1	600	230V~	200320	347	200220	370	200520	469
CV 20-09-1	900	230V~	200321	360	200221	384	200521	481
CV 20-12-1	1200	230V~	200322	360	200222	384	200522	481
CV 20-15-1	1500	230V~	200323	376	200223	400	200523	497
CV 20-18-1	1800	230V~	200324	376	200224	400	200524	497
CV 20-21-1	2100	230V~	200325*	380	200225	403	200525	500
CV 20-30-1	3000	230V~	200326	418	200226	442	200526	540
CV 20-30-2	3000	400V2~	200327	418	200227	442	200527	540
CV 20-50-2	5000	400V2~	200328*	477	200228	500	200528	598
CV 20-60-2	6000	400V2~	200329	500	200229	500	200529	621
CV 20-60-3	6000	400V3~	200330	706	200230	706	200530	804
CV 25-06-1	600	230V~	200331	365	200231	391	200531	487
CV 25-09-1	900	230V~	200332	383	200232	406	200532	503
CV 25-12-1	1200	230V~	200333	383	200233	406	200533	503
CV 25-15-1	1500	230V~	200334	396	200234	419	200534	518
CV 25-18-1	1800	230V~	200335	396	200235	419	200535	518
CV 25-21-1	2100	230V~	200336*	405	200236	429	200536	527
CV 25-30-1	3000	230V~	200337*	429	200237	453	200537	549
CV 25-30-2	3000	400V2~	200338	429	200238	453	200538	549
CV 25-50-2	5000	400V2~	200339	488	200239	513	200539	610
CV 25-60-2	6000	400V2~	200340*	513	200240	536	200540	631
CV 25-60-3	6000	400V3~	200342	716	200242	716	200542	813
CV 25-90-3	9000	400V3~	200343	763	200243	763	200543	861
CV 25-120-3	12000	400V3~	200344	879	200244	879	200544	976
CV 31-09-1	900	230V~	200345	399	200245	423	200545	520
CV 31-12-1	1200	230V~	200346	399	200246	423	200546	520
CV 31-15-1	1500	230V~	200347	416	200247	440	200547	531
CV 31-18-1	1800	230V~	200348	416	200248	440	200548	531
CV 31-21-1	2100	230V~	200349	418	200249	442	200549	540
CV 31-30-1	3000	230V~	200350	440	200250	463	200550	561
CV 31-30-2	3000	400V2~	200351	440	200251	463	200551	561
CV 31-50-2	5000	400V2~	200352	498	200252	522	200552	619
CV 31-60-2	6000	400V2~	200353*	521	200253	544	200553	643
CV 31-60-3	6000	400V3~	200355	725	200255	726	200555	823
CV 31-90-3	9000	400V3~	200356*	776	200256	776	200556	874
CV 31-120-3	12000	400V3~	200357	891	200257	891	200557	988
CV 40-30-1	3000	230V~	200360	451	200260	475	200560	572
CV 40-30-2	3000	400V2~	200361	451	200261	475	200561	572
CV 40-50-2	5000	400V2~	200362	507	200262	532	200562	629
CV 40-60-2	6000	400V2~	200363	532	200263	556	200563	654
CV 40-60-3	6000	400V3~	200365	738	200265	738	200565	835
CV 40-90-3	9000	400V3~	200366	786	200266	786	200566	884
CV 40-120-3	12000	400V3~	200367	908	200267	908	200567	1 005

CV -MQU



All models, except -MQU and -MTU, can be manufactured in protection class IP55 at an additional cost of EUR 55,-/heater.

* = Available from stock.

**=For model -MQU external sensor is required.

***=For model -MQEM external setting and sensor are required.

Electric duct heater CV -MTU / -MTEM / -MTXL (built-in temp. regulator) 300 W - 12000 W

Type	Power W	Voltage V	For external or internal temperature setting Model -MTU**		For external temp. set- ting min/max limitation Model -MTEM***		For external 0...10V control signal. Model -MTXL	
			Art. No.	Price	Art. No.	Price	Art. No.	Price
CV 10-04-1	400	230V~	208301	214	208201	237	208501	335
CV 10-06-1	600	230V~	208302	218	208202	242	208502	339
CV 12-03-1	300	230V~	208303	222	208203	247	208503	343
CV 12-06-1	600	230V~	208304	237	208204	261	208504	359
CV 12-09-1	900	230V~	208305	252	208205	275	208505	372
CV 12-12-1	1200	230V~	208306	259	208206	283	208506	380
CV 12-15-1	1500	230V~	208307	273	208207	298	208507	395
CV 12-18-1	1800	230V~	208308	291	208208	314	208508	411
CV 16-03-1	300	230V~	208309	236	208209	260	208509	357
CV 16-06-1	600	230V~	208310	236	208210	260	208510	357
CV 16-09-1	900	230V~	208311	253	208211	277	208511	375
CV 16-12-1	1200	230V~	208312	265	208212	289	208512	386
CV 16-15-1	1500	230V~	208313	269	208213	305	208513	390
CV 16-18-1	1800	230V~	208314	269	208214	305	208514	390
CV 16-21-1	2100	230V~	208315	278	208215	302	208515	401
CV 16-27-1	2700	230V~	208316	300	208216	324	208516	421
CV 16-33-2	3300	400V2~	208317	318	208217	342	208517	440
CV 16-50-2	5000	400V2~	208318	372	208218	396	208518	493
CV 16-50-3	5000	400V3~	208319	577	208219	577	208519	674
CV 20-06-1	600	230V~	208320	255	208220	278	208520	377
CV 20-09-1	900	230V~	208321	268	208221	292	208521	388
CV 20-12-1	1200	230V~	208322	268	208222	292	208522	388
CV 20-15-1	1500	230V~	208323	284	208223	308	208523	405
CV 20-18-1	1800	230V~	208324	284	208224	308	208524	405
CV 20-21-1	2100	230V~	208325	288	208225	311	208525	408
CV 20-30-1	3000	230V~	208326	326	208226	350	208526	448
CV 20-30-2	3000	400V2~	208327	326	208227	350	208527	448
CV 20-50-2	5000	400V2~	208328	384	208228	408	208528	505
CV 20-60-2	6000	400V2~	208329	408	208229	408	208529	529
CV 20-60-3	6000	400V3~	208330	614	208230	614	208530	711
CV 25-06-1	600	230V~	208331	273	208231	298	208531	395
CV 25-09-1	900	230V~	208332	291	208232	314	208532	411
CV 25-12-1	1200	230V~	208333	291	208233	314	208533	411
CV 25-15-1	1500	230V~	208334	303	208234	327	208534	425
CV 25-18-1	1800	230V~	208335	303	208235	327	208535	425
CV 25-21-1	2100	230V~	208336	313	208236	337	208536	435
CV 25-30-1	3000	230V~	208337	337	208237	361	208537	457
CV 25-30-2	3000	400V2~	208338	337	208238	361	208538	457
CV 25-50-2	5000	400V2~	208339	396	208239	420	208539	518
CV 25-60-2	6000	400V2~	208340	420	208240	444	208540	539
CV 25-60-3	6000	400V3~	208342	624	208242	624	208542	721
CV 25-90-3	9000	400V3~	208343	670	208243	670	208543	769
CV 25-120-3	12000	400V3~	208344	787	208244	787	208544	884
CV 31-09-1	900	230V~	208345	306	208245	331	208545	427
CV 31-12-1	1200	230V~	208346	306	208246	331	208546	427
CV 31-15-1	1500	230V~	208347	324	208247	347	208547	439
CV 31-18-1	1800	230V~	208348	324	208248	347	208548	439
CV 31-21-1	2100	230V~	208349	326	208249	350	208549	448
CV 31-30-1	3000	230V~	208350	347	208250	371	208550	468
CV 31-30-2	3000	400V2~	208351	347	208251	371	208551	468
CV 31-50-2	5000	400V2~	208352	406	208252	429	208552	527
CV 31-60-2	6000	400V2~	208353	428	208253	452	208553	550
CV 31-60-3	6000	400V3~	208355	632	208255	633	208555	731
CV 31-90-3	9000	400V3~	208356	684	208256	684	208556	782
CV 31-120-3	12000	400V3~	208357	798	208257	798	208557	896
CV 40-30-1	3000	230V~	208360	359	208260	382	208560	480
CV 40-30-2	3000	400V2~	208361	359	208261	382	208561	480
CV 40-50-2	5000	400V2~	208362	415	208262	440	208562	537
CV 40-60-2	6000	400V2~	208363	440	208263	463	208563	562
CV 40-60-3	6000	400V3~	208365	646	208265	646	208565	743
CV 40-90-3	9000	400V3~	208366	694	208266	694	208566	791
CV 40-120-3	12000	400V3~	208367	816	208267	816	208567	912



CV -MTU

All models, except -MQU and -MTU, can be manufactured in protection class IP55 at an additional cost of EUR 55,-/heater.

**=For model -MTU external sensor is required.

***=For model -MTEM external setting and sensor are required.

Electric duct heater CV -M / -ML / -EL / -R (external temperature regulator) 300 W - 12000 W

Type	Power W	Voltage V	Model -M up to 9000 W Model -E** for 12 000 W		Model -ML up to 9000 W Model -EL** for 12 000 W		Model -R*** Remote reset of overheating protection	
			Art. No.	Price	Art. No.	Price	Art. No.	Price
CV 10-04-1_	400	230V~	208001*	113	208101	152	208801	236
CV 10-06-1_	600	230V~	208002	117	208102	158	208802	240
CV 12-03-1_	300	230V~	208003	122	208103	163	208803	246
CV 12-06-1_	600	230V~	208004	135	208104	176	208804	260
CV 12-09-1_	900	230V~	208005*	150	208105	190	208805	273
CV 12-12-1_	1200	230V~	208006*	158	208106	198	208806	281
CV 12-15-1_	1500	230V~	208007	173	208107	214	208807	296
CV 12-18-1_	1800	230V~	208008	188	208108	229	208808	312
CV 16-03-1_	300	230V~	208009	135	208109	175	208809	259
CV 16-06-1_	600	230V~	208010	135	208110	175	208810	259
CV 16-09-1_	900	230V~	208011*	151	208111	193	208811	276
CV 16-12-1_	1200	230V~	208012	163	208112	205	208812	289
CV 16-15-1_	1500	230V~	208013	166	208113	209	208813	292
CV 16-18-1_	1800	230V~	208014	166	208114	209	208814	292
CV 16-21-1_	2100	230V~	208015*	176	208115	218	208815	301
CV 16-27-1_	2700	230V~	208016	199	208116	239	208816	323
CV 16-33-2_	3300	400V2~	208017	217	208117	258	208817	340
CV 16-50-2_	5000	400V2~	208018*	270	208118	312	208818	395
CV 16-50-3_	5000	400V3~	208019	270	208119	312	208819	395
CV 20-06-1_	600	230V~	208020	152	208120	193	208820	276
CV 20-09-1_	900	230V~	208021	171	208121	206	208821	290
CV 20-12-1_	1200	230V~	208022	171	208122	206	208822	290
CV 20-15-1_	1500	230V~	208023	183	208123	222	208823	306
CV 20-18-1_	1800	230V~	208024	183	208124	222	208824	306
CV 20-21-1_	2100	230V~	208025*	188	208125	224	208825	309
CV 20-30-1_	3000	230V~	208026	224	208126	265	208826	349
CV 20-30-2_	3000	400V2~	208027	224	208127	265	208827	347
CV 20-50-2_	5000	400V2~	208028*	281	208128	323	208828	407
CV 20-60-2_	6000	400V2~	208029	305	208129	346	208829	431
CV 20-60-3_	6000	400V3~	208030	305	208130	347	208830	431
CV 25-06-1_	600	230V~	208031	172	208131	214	208831	295
CV 25-09-1_	900	230V~	208032	188	208132	229	208832	312
CV 25-12-1_	1200	230V~	208033	188	208133	229	208833	312
CV 25-15-1_	1500	230V~	208034	203	208134	243	208834	326
CV 25-18-1_	1800	230V~	208035	203	208135	243	208835	326
CV 25-21-1_	2100	230V~	208036*	212	208136	253	208836	336
CV 25-30-1_	3000	230V~	208037	234	208137	276	208837	360
CV 25-30-2_	3000	400V2~	208038	234	208138	276	208838	360
CV 25-50-2_	5000	400V2~	208039	294	208139	335	208839	418
CV 25-60-2_	6000	400V2~	208040*	316	208140	359	208840	440
CV 25-60-3_	6000	400V3~	208042	316	208142	359	208842	440
CV 25-90-3_	9000	400V3~	208043	363	208143	405	208843	487
CV 25-120-3_	12000	400V3~	208644	410	208744**	451	—	—
CV 31-09-1_	900	230V~	208045	204	208145	244	208845	327
CV 31-12-1_	1200	230V~	208046	204	208146	244	208846	327
CV 31-15-1_	1500	230V~	208047	216	208147	258	208847	340
CV 31-18-1_	1800	230V~	208048	216	208148	258	208848	340
CV 31-21-1_	2100	230V~	208049	224	208149	265	208849	349
CV 31-30-1_	3000	230V~	208050	246	208150	287	208850	370
CV 31-30-2_	3000	400V2~	208051	246	208151	287	208851	370
CV 31-50-2_	5000	400V2~	208052	304	208152	344	208852	428
CV 31-60-2_	6000	400V2~	208053*	326	208153	366	208853	450
CV 31-60-3_	6000	400V3~	208055	326	208155	366	208855	450
CV 31-90-3_	9000	400V3~	208056*	376	208156	415	208856	499
CV 31-120-3_	12000	400V3~	208657**	422	208757**	462	—	—
CV 40-30-1_	3000	230V~	208060	256	208160	296	208860	380
CV 40-30-2_	3000	400V2~	208061	256	208161	296	208861	380
CV 40-50-2_	5000	400V2~	208062	314	208162	356	208862	439
CV 40-60-2_	6000	400V2~	208063	338	208163	380	208863	462
CV 40-60-3_	6000	400V3~	208065	338	208165	380	208865	462
CV 40-90-3_	9000	400V3~	208066	386	208166	427	208866	513
CV 40-120-3_	12000	400V3~	208667**	438	208767**	480	—	—



CV -M

All models, except -MQU and -MTU, can be manufactured in protection class IP55 at an additional cost of EUR 55,-/heater.

* = Available from stock.

** = 12000W manufactured as model CV__-120-3E / 3EL.

*** = For model -R you need Art.No. 101290 (see table to the right).

Description	Art. No	Price
Reset button RSI/RSU	101290*	42

Electric duct heater CV -PTU / -PTEM / -PTXL / -P (for air velocity <1,5m/s) 200 W - 1800 W

Type	Power W	Voltage V	For external or internal temperature setting Model -PTU**		For external temp.set- ting min/max limitation Model -PTEM***		For external 0...10V control signal. Model -PTXL		For external control Model -P	
			Art. No.	Price	Art. No.	Price	Art. No.	Price	Art. No.	Price
CV 08-02-1_	200	230V~	209625	220	209675	242	209650	338	209600	121
CV 10-02-1_	200	230V~	209628	220	209678	242	209653	338	209603	121
CV 10-04-1_	400	230V~	209629	227	209679	249	209654	345	209604	128
CV 12-02-1_	200	230V~	209632	227	209682	249	209657	345	209607	128
CV 12-04-1_	400	230V~	209633	246	209683	268	209658	364	209608	147
CV 12-06-1_	600	230V~	209634	264	209684	286	209659	382	209609	165
CV 12-08-1_	800	230V~	209635	277	209685	299	209660	395	209610	178
CV 12-10-1_	1000	230V~	209636	295	209686	317	209636	413	209611	196
CV 12-12-1_	1200	230V~	209637	316	209687	338	209662	434	209612	217
CV 16-06-1_	600	230V~	209645	264	209695	286	209670	382	209620	165
CV 16-12-1_	1200	230V~	209646	290	209696	312	209671	408	209621	191
CV 16-18-1_	1800	230V~	209697	332	209697	354	209672	450	209622	233

All models, except -PTU, can be manufactured in protection class IP55 at an additional cost of EUR 55,-/heater.

**=For model -PTU external sensor is required.

***=For model -PTEM external setting and sensor are required.

Electric duct heaters VFL / VFLPG / VTL / VRA



Table A

Front area m ²	Price
-0,05	287
0,06-0,10	291
0,11-0,15	305
0,16-0,20	318
0,21-0,30	334
0,31-0,50	346
0,51-0,80	358
0,81-1,00	401
1,01-1,50	499
1,51-2,00	579

Table B - external control

Price /step	
Power kW	Price
0,5	47
1,0	53
1,5	70
2,0	78
2,5	84
3,0	93
3,5	96
4,0	103
4,5	105
5,0	112
5,5	120
6,0	136
6,5	141
7,0	146
7,5	158
8,0	185
9,0	194
10,0	211
11,0	221
12,0	234
13,0	248
14,0	262
15,0	294
16,0	310
17,0	322
18,0	344
20,0	383
22,0	458
24,0	491
26,0	570
28,0	587
30,0	620
32,0	660
34,0	693
36,0	723
40,0	839
43,0	894

For connection voltage 400V3~
and 500V3~ the price will be increased with 15%.

You will obtain the total price by adding the prices in the tables accordingly:

- Duct heater for external temperature control (A+B)

The total price will be obtained by adding the price for the frame, table A, with the price for all steps, table B.

- Duct heater with built-in control (A+C)

The total price will be obtained by adding the price for the frame, table A, with the price for the total power, table C.

- Duct heater with built-in control and electronic air flow monitor (A+D)

The total price will be obtained by adding the price for the frame, table A, with the price for the total power, table D.

In addition to the price:

At degree of protection IP55 the prices in table A will increase with 50%.

At degree of protection IP65 the prices in table A will increase with 100%.

For loose counter flanges (2 pcs) the price in table A will increase with 25%.

Table A

Front area m ²	Price
-0,05	287
0,06-0,10	291
0,11-0,15	305
0,16-0,20	318
0,21-0,30	334
0,31-0,50	346
0,51-0,80	358
0,81-1,00	401
1,01-1,50	499
1,51-2,00	579

Table C - built-in control

		Price / power					
		Model					
		Total power	MTEML 400V~ Regulation: TG-sensor**	MTXL 400V~ Regulation: 0...10V	MTEML 230V~ Regulation: TG-sensor**	MTXL 230V~ Regulation: 0...10V	
		kW	Price	Price	Price	Price	
400V2~	1,5	351	428	353	448	230V~	
	2	356	439	361	457		
	3	381	459	589	689		
	5	400	479	611	714		
	6	620	694	760	863		
400V3~	7,5	650	723	828	950	230V3~	
	9	823	892	870	994		
	13	864	933	1 323	1 323		
	15	956	1 043	1 421	1 421		
	17	981	1 067	2 036	2 036		
	19	1 441	1 441	2 112	2 112		
	24	1 532	1 532	2 258	2 258		
	27	1 694	1 694	2 557	2 557		
	30	2 222	2 222	2 620	2 620		
	34	2 309	2 309	2 929	2 929		
	39	2 483	2 483	2 980	2 980		
	43	2 675	2 675	3 203	3 203		
	47	2 855	2 855	3 303	3 303		
	54	3 153	3 153	3 657	3 657		
	60	3 326	3 326	3 850	3 850		
	67,5	3 599	3 599	4 371	4 371		
	75	3 936	3 936	4 840	4 840		
	81	4 028	4 028	5 286***	5 286***		
	95	4 376	4 376	5 792***	5 792***		
	108	4 897	4 897	6 347***	6 347***		
	120	5 228	5 228	6 696***	6 696***		
	127	5 829	5 829	6 983***	6 983***		
	135	5 890	5 890				
	150	6 807***	6 807***				
	162	7 183***	7 183***				
175	7 658***	7 658***					
189	8 053***	8 053***					
200	8 418***	8 418***					
215	9 132***	9 132***					

**= sensor is not included in the price.
***= manufactured for double power supplies

Table A

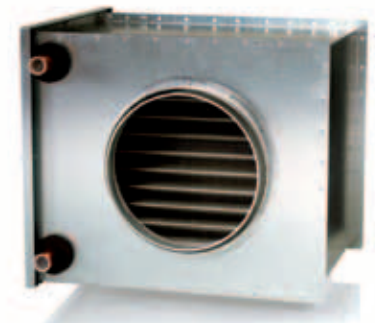
Front area m ²	Price
-0,05	287
0,06-0,10	291
0,11-0,15	305
0,16-0,20	318
0,21-0,30	334
0,31-0,50	346
0,51-0,80	358
0,81-1,00	401
1,01-1,50	499
1,51-2,00	579

Table D - built-in control with electronic air flow monitor

		Price / power					
		Model					
		Total power	MQEML 400V~ Regulation: TG-sensor**	MQXL 400V~ Regulation: 0...10V	MQEML 230V~ Regulation: TG-sensor**	MQXL 230V~ Regulation: 0...10V	
		kW	Price	Price	Price	Price	
400V2~	1,5	443	520	445	540	230V~	
	2	448	531	453	549		
	3	473	551	681	781		
	5	492	571	703	806		
	6	712	786	852	955		
400V3~	7,5	742	815	920	1 042	230V3~	
	9	915	984	962	1 086		
	13	956	1 025	1 415	1 415		
	15	1 048	1 135	1 513	1 513		
	17	1 073	1 159				
	19	1 533	1 533				
	24	1 624	1 624				
	27	1 786	1 786				

**= sensor is not included in the price.
***= manufactured for double power supplies

Duct heater CWW for hot water				
Type	Size	No. of rows	Art. No.	Price
CWW 100-2-2,5	Ø 100	2	220000	193
CWW 100-3-2,5	Ø 100	3	220033	257
CWW 125-2-2,5	Ø 125	2	220001	201
CWW 125-3-2,5	Ø 125	3	220027	291
CWW 160-2-2,5	Ø 160	2	220002	216
CWW 160-3-2,5	Ø 160	3	220028	303
CWW 200-2-2,5	Ø 200	2	220003	235
CWW 200-3-2,5	Ø 200	3	220029	408
CWW 250-2-2,5	Ø 250	2	220004	318
CWW 250-3-2,5	Ø 250	3	220030	475
CWW 315-2-2,5	Ø 315	2	220005	370
CWW 315-3-2,5	Ø 315	3	220031	574
CWW 400-2-2,5	Ø 400	2	220006	435
CWW 400-3-2,5	Ø 400	3	220037	640
CWW 500-2-2,5	Ø 500	2	220007	588



CWW

Duct heater PGV for hot water				
Type	Size	No. of rows	Art. No.	Price
PGV 400x200-2-2,5	400x200	2	106140	187
PGV 400x200-4-2,5	400x200	4	106141	284
PGV 500x250-2-2,5	500x250	2	106142	235
PGV 500x250-4-2,5	500x250	4	106143	344
PGV 500x300-2-2,5	500x300	2	106144	272
PGV 500x300-4-2,5	500x300	4	106145	394
PGV 600x300-2-2,5	600x300	2	106146	295
PGV 600x300-4-2,5	600x300	4	106147	412
PGV 600x350-2-2,5	600x350	2	106148	324
PGV 600x350-4-2,5	600x350	4	106149	472
PGV 700x400-2-2,5	700x400	2	106150	374
PGV 700x400-3-2,5	700x400	3	106151	468
PGV 800x500-2-2,5	800x500	2	106152	462
PGV 800x500-3-2,5	800x500	3	106153	575
PGV 1000x500-2-2,5	1000x500	2	106154	525
PGV 1000x500-3-2,5	1000x500	3	106155	660



PGV

Prices for our customized rectangular duct heaters and duct coolers WHS, WCS, DXES, DXCS, SHS and condensers CS are quoted on request.

Duct cooler CWK for cooled water				
Type	Size	No. of rows	Art. No.	Price
CWK 100-3-2,5	Ø 100	3	220020	285
CWK 125-3-2,5	Ø 125	3	220021	325
CWK 160-3-2,5	Ø 160	3	220022	335
CWK 200-3-2,5	Ø 200	3	220023	453
CWK 250-3-2,5	Ø 250	3	220024	526
CWK 315-3-2,5	Ø 315	3	220025	639
CWK 400-3-2,5	Ø 400	3	220026	711



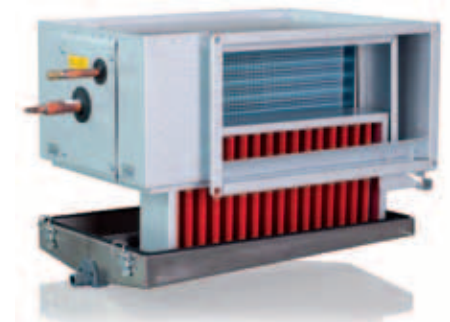
CWK

Duct cooler PGK for cooled water				
Type	Size	No. of rows	Art. No.	Price
PGK 400x200-3-2,0	400x200	3	210200	536
PGK 400x200-4-2,0	400x200	4	210400	620
PGK 500x250-3-2,0	500x250	3	210201	614
PGK 500x250-4x2,0	500x250	4	210401	705
PGK 500x300-3-2,0	500x300	3	210202	650
PGK 500x300-4-2,0	500x300	4	210402	750
PGK 600x300-3-2,0	600x300	3	210203	691
PGK 600x300-4-2,0	600x300	4	210403	815
PGK 600x350-3-2,0	600x350	3	210204	712
PGK 600x350-4-2,0	600x350	4	210404	840
PGK 700x400-3-2,0	700x400	3	210205	885
PGK 700x400-4-2,0	700x400	4	210405	1 025
PGK 800x500-3-2,0	800x500	3	210206	1 060
PGK 800x500-4-2,0	800x500	4	210406	1 250
PGK 1000x500-3-2,0	1000x500	3	210207	1 185
PGK 1000x500-4-2,0	1000x500	4	210407	1 460



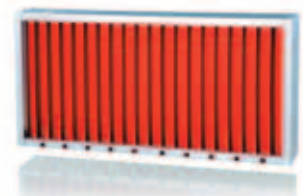
PGK

Duct cooler PGDX with DX-coil				
Type	Size	No. of rows	Art. No.	Price
PGDX 400x200-3-2,5	400x200	3	210240	536
PGDX 500x250-3-2,5	500x250	3	210241	614
PGDX 500x300-3-2,5	500x300	3	210242	650
PGDX 600x300-3-2,5	600x300	3	210243	691
PGDX 600x350-3-2,5	600x350	3	210244	712
PGDX 700x400-3-2,5	700x400	3	210245	852
PGDX 800x500-3-2,5	800x500	3	210246	972
PGDX 1000x500-3-2,5	1000x500	3	210247	1 062



PGDX with DE

Drop eliminator DE for PGK and PGDX				
Type	Description	Art. No.	Price	
DE 40x20	for PGK/PGDX 400x200	210210	138	
DE 50x25	for PGK/PGDX 500x250	210211	148	
DE 50x30	for PGK/PGDX 500x300	210212	180	
DE 60x30	for PGK/PGDX 600x300	210213	233	
DE 60x35	for PGK/PGDX 600x350	210214	265	
DE 70x40	for PGK/PGDX 700x400	210215	291	
DE 80x50	for PGK/PGDX 800x500	210216	319	
DE 100x50	for PGK/PGDX 1000x500	210217	332	



DE

Electric duct heaters - accessories

Regulators

Type	Description	Art. No.	Price
PULSER	Controller basic model 230V~/4002~	104600	104
PULSER-ADD	Controller for additional load 230V~/4002~	104601	104
PULSER-M	Controller for additional max/min sensor	104602	112
PULSER-D	Controller 230V~/400V2~, for DIN rail mounting	104603	104
PULSER-DSP	Controller 230V~/400V2~, with display	107408	160
PULSER 220 X010	Controller 230V~ for input control signal 0...10V	101790	144
PULSER 380 X010	Controller 400V2~ for input control signal 0...10V	102585	144
TTC 2000	Controlller 17,0 kW, 400V 3~/10,0 kW, 230V~	106270	497
TT-S1	Ancillary board for extra load on TTC	106271	77
TTC 25	Controller, unencapsulated, 25 A	104258	434
TTC 25X	Controller, unencapsulated, 25 A, 0...10V control signal	104259	400
TTC 40F	Controller, unencapsulated, 40 A	104260	549
TTC 40FX	Controller, unencapsulated, 40 A, 0...10V control signal	104261	506
TTC 63F	Controller, 63 A, 0...10V control signal	107014	650
TT-S4/D	Step controller for 0...10V control signal, 4 relays	103656	205
TT-S6/D	Step controller for 0...10V control signal, 6 relays	103659	328
SC1/D	Signal converter, 1 step	103735	122
SC2/D	Signal converter, 2 steps	104780	144

PULSER



Sensors

Type	Description	Art. No.	Price
TG-K330	Duct sensor (0-30°C)	103728	30
TG-K350	Duct sensor (20-50°C)	103729	30
TG-K370	Duct sensor (40-70°C)	103730	30
TG-K360	Duct sensor (0-60°C)	103733	30
TG-K3120	Duct sensor (60-120°C)	103734	37
TG-R430	Room sensor / setpoint adjuster, IP30 (0-30°C)	101307	39
TG-R530	Room sensor, IP30 (0-30°C)	101308	26
TG-R630	Room sensor, IP54 (0-30°C)	101309	49
TBI-30	Setpoint adjuster for panel mounting	103205	34
TG-A130	Clamp on sensor for frost protection	102032	30
TG-D130	Immersion sensor 1/4" L=120, for frost protection	102031	38
TG-D230	Immersion sensor 1/4" L=220, for frost protection	102030	41

TG-K330



TG-R430



Pressure switches

Type	Description	Art. No.	Price
DTV 200, incl ANS	Pressure switch 20-300 Pa, max 5 A. 230V~	101950	51
DTV 500, incl ANS	Pressure switch 50-500 Pa, max 5 A. 230V~	101949	51
AFS 222-181	Pressure switch 10-3000 Pa, max 15 A. 230V~	101019	92
ANS	Connection set for AFS	104929	6

Thermostats

Type	Description	Art. No.	Price
C 04 C	Duct thermostat, 1 step, IP40	103210	94
TI-N	Room thermostat, 1 step, IP30	101010	32
TM 1-P	Electric room thermostat 230V~, wall mounted, 1 step	101006	30

DTV 200



Humidistats

Type	Description	Art. No.	Price
HR-1	Humidistats, room 10-95%, ±2,5% 5 A	102588	72
HMH	Humidistats, room/duct 10-100%, ±1,5% 10 A	102589	159

Regulators and sensors*			
Type	Description	Art. No.	Price
AQUA 24TF	Controller, 3-way, 24V~, frost guard	102022	167
RC	Controller, 0...10V control signal, 24V~	107364	128
RC-DO	Controller, 0...10V control signal, 24V~ w. display	107365	144
OPTIGO OP5	Controller, 0...10V control signal, 24V~	107011	154
OPTIGO OP10	Controller, 0...10V control signal/3-way, 24V~	107012	226
OPTIGO OP10-230	Controller, 0...10V control signal/3-way, 230V~	107013	236
TG-K3/PT1000	Duct sensor, IP65	102051	35
TG-R5/PT1000	Room sensor, IP30	104413	36
TG-UH/PT1000	Room sensor, IP65	104414	47
TG-A1/PT1000	Clamp on sensor for frost protection	102046	29
TG-D1/PT1000	Immersion sensor, L=120, for frost protection	102047	41
TG-D2/PT1000	Immersion sensor, L=220, for frost protection	107015	41
TRAFO 60	Transformer 230V~/ 24V~ 60 VA	101051	57

*= Sensors for AQUA, see page 10

OPTIGO OP5/10



Valves and actuators (max 110°C)			
Type	Description	Art. No.	Price
RVAZ4-24	Valve actuator 3 point floating, for ZTV/ZTR valves	107370	108
RVAZ4-24A	Valve actuator 0...10V, for ZTV/ZTR valves	107371	169
ZTV15-0,25	Valve, 2-way, 1/2", kvs 0,25	107372	46
ZTV15-0,4	Valve, 2-way, 1/2", kvs 0,4	107373	46
ZTV15-0,6	Valve, 2-way, 1/2", kvs 0,6	107374	46
ZTV15-1,0	Valve, 2-way, 1/2", kvs 1,0	107375	46
ZTV15-1,6	Valve, 2-way, 1/2", kvs 1,6	107376	46
ZTV20-2,0	Valve, 2-way, 3/4", kvs 2,0	107377	53
ZTV20-2,5	Valve, 2-way, 3/4", kvs 2,5	107378	53
ZTV20-4,0	Valve, 2-way, 3/4", kvs 4,0	107379	53
ZTV20-6,0	Valve, 2-way, 3/4", kvs 6,0	107380	53
ZTVB25-8,0	Valve, 2-way, 3/4", kvs 6,0	107334	155
ZTR15-0,25	Valve, 3-way, 1/2", kvs 0,25	107381	50
ZTR15-0,4	Valve, 3-way, 1/2", kvs 0,4	107382	50
ZTR15-0,6	Valve, 3-way, 1/2", kvs 0,6	107383	50
ZTR15-1,0	Valve, 3-way, 1/2", kvs 1,0	107384	50
ZTR15-1,6	Valve, 3-way, 1/2", kvs 1,6	107385	58
ZTR20-2,0	Valve, 3-way, 3/4", kvs 2,0	107386	58
ZTR20-2,5	Valve, 3-way, 3/4", kvs 2,5	107387	58
ZTR20-4,0	Valve, 3-way, 3/4", kvs 4,0	107388	58
ZTR20-6,0	Valve, 3-way, 3/4", kvs 6,0	107389	58
ZTRB25-8,0	Valve, 3-way, 1", kvs 8,0	107872	155

Actuator RVAZ4-24



Valve ZTV



Valves and actuators (BTV max 140°C, BTR max 185°C)			
Type	Description	Art. No.	Price
RVA5-24	Valve actuator 3 point floating, for BTV/BTR valves	107390	172
RVA5-24A	Valve actuator 0...10 V, for BTV/BTR valves	107391	197
BTV15-1,0	Valve, 2-way, 1/2", kvs 1,0	107392	90
BTV15-1,6	Valve, 2-way, 1/2", kvs 1,6	107393	90
BTV15-2,5	Valve, 2-way, 1/2", kvs 2,5	107394	90
BTV20-3,9	Valve, 2-way, 3/4", kvs 3,9	107395	114
BTV25-6,3	Valve, 2-way, 3/4", kvs 6,3	107396	120
BTV25-10,0	Valve, 2-way, 1", kvs 10,0	107397	120
BTV32-16,0	Valve, 2-way, 1 1/4", kvs 16,0	107398	156
BTR15-0,63	Valve, 3-way, 1/2", kvs 0,63	107399	98
BTR15-1,0	Valve, 3-way, 1/2", kvs 1,0	107400	98
BTR15-1,6	Valve, 3-way, 1/2", kvs 1,6	107401	98
BTR15-2,1	Valve, 3-way, 1/2", kvs 2,1	107402	98
BTR15-2,7	Valve, 3-way, 1/2", kvs 2,7	107403	98
BTR20-4,2	Valve, 3-way, 3/4", kvs 4,2	107404	121
BTR20-5,6	Valve, 3-way, 3/4", kvs 5,6	107405	121
BTR25-10,0	Valve, 3-way, 1", kvs 10,0	107406	136
BTR32-16,0	Valve, 3-way, 1 1/4", kvs 16,0	107407	157

Actuator RVA5-24



Valve BTR



ROBUST - electric fan heaters for difficult environments

ROBUST F - for fire hazardous environments

Type	W	V	Art. No.	Price
F 2	2000	230V~	401218	939
F 3	3000	230V~	401205	939
F 6	6000	400V3~	401207	1 095
F 6N	6000	230V3~	401206	1 095
F 9	9000	400V3~	401209	1 230
F 9N	9000	230V3~	401208	1 230

ROBUST F



ROBUST C - for corrosive environments

Type	W	V	Art. No.	Price
C 3	3000	230V~	401200	1 353
C 6	6000	400V3~	401202	1 643
C 6N	6000	230V3~	401201	1 643
C 9	9000	400V3~	401204	1 768
C 9N	9000	230V3~	401203	1 768
C 15	15000	400V3~	401217	2 424

ROBUST C
wall mounted



ROBUST H - for high temperatures (up to 70°C)

Type	W	V	Art. No.	Price
H 6	6000	400V3N~	401213	1 530
H 6N	6000	230V3~	401212	1 530
H 9	9000	400V3N~	401214	1 672

ROBUST V - for ships and offshore

Type	W	V	Art. No.	Price
V 3	3000	400V3~ 50Hz	401215	1 170
V 3R	3000	230V~ 50Hz	401219	1 170
V 3.6	3600	440V3~ 60Hz	401210	1 170
V 5	5000	400V3~ 50Hz	401216	1 279
V 5N	5000	230V3~ 50Hz	401250	1 279
V 6	6000	440V3~ 60Hz	401211	1 279

ROBUST V
wall mounted



ROBUST - accessories

Type	Description	Art. No.	Price
RST	External start/stop switch for model F	402000	92
RTC	External control box for model C and V	402001	185
RTH	External thermostat 0-70°C for model H	402002	162

EA - electric fan heaters

Type	W	V	Art. No.	Price
EA 6	6000	400V3N~	401105	952
EA 9	9000	400V3N~	401110	1 091
EA 14	14000	400V3N~	401115	1 366
EA 21	21000	400V3N~	401120	1 643
EA 30	30000	400V3N~	401145	1 992

Note: The EA fan heaters must be completed with a sensor (not included in the price). The mixing section must be completed with a damper actuator or a manual operating handle.



Fan heater EA

EA - accessories

Type	Description	Art. No.	Price
EALH 10	Air deflector for EA 6 and EA 9	401111	114
EALH 20	Air deflector for EA 14, EA 21 and EA 30	401121	132
AWB 11	Mixing section for EA 6 and EA 9	421043	428
AWB 22	Mixing section for EA 14, EA 21 and EA 30	421044	541
AWY 11	Outer wall grille for EA 6 and EA 9	401113	171
AWY 22	Outer wall grille for EA 14, EA 21 and EA 30	421060	197
LM 230	Damper motor for AWB 11, IP54	104368	140
NM 230	Damper motor for AWB 22, IP54	104369	174
AWBH	Manual operating handle	422015	64
TG-R430	Room sensor / setpoint adjuster, IP30 (0-30°C)	101307	39
TG-R530	Room sensor, IP30 (0-30°C)	101308	26
TG-R630	Room sensor, IP54 (0-30°C)	101309	49

Fan heater ENV



ENV - electric fan heaters

Type	W	V	Art. No.	Price
ENV 2	2000	230V~	401180	356
ENV R2	2000	230V~	401181	295
ENV 3	3000	230V~	401182	356
ENV R3	3000	230V~	401183	295
ENV 5	5000	400V3N~	401184	383
ENV R5	5000	400V3N~	401185	326
ENV 9	9000	400V3N~	401186	465
ENV R9	9000	400V3N~	401187	408
ENV 15	15000	400V3N~	401188	876
ENV R15	15000	400V3N~	401189	807

ENV - accessories

Type	Description	Art. No.	Price
RC 1	Ext. control box for one ENV R3-R15	401190	168
RC 3	Ext. control box for max 3 pcs ENV R3-R15	401191	233
ENVLH 3-5	Air deflector (vertical) for ENV 3-5	401192	71
ENVLH 9-15	Air deflector (vertical) for ENV 9-15	401193	94



Fan heater BX

BX - electric fan heaters

Type	W	V	Art. No.	Price
BX 2E	2000	230V~	451200	236
BX 3E	3000	230V~	451210	258
BX 5E	5000	400V3N~	451220	319
BX 9SE	9000	400V3~	451250	397
BX 9AE	9000	400V3~	451260	435
BX 15E	15000	400V3~	451280	646
BX 20	20000	400V3~	104498	1 333
BX 30	30000	400V3~	104499	1 481

Fan heater EN

EN - electric fan heaters

Type	W	V	Art. No.	Price
EN 2	2000	230V~	451400	193
EN 3	3000	230V~	451415	218
EN 5	5000	400V3N~	451430	283
EN 9	9000	400V3N~	451460	328
EN 15	15000	400V3N~	451480	538



Fan heater KX 2

KX - electric fan heater

Type	W	V	Art. No.	Price
KX 2	2000	230V~	451303	136

Fan heaters for hot water, AW for wall-mounting and CAW for ceiling-mounting

AW 12

Type	Art. No	Price
AW 12s	421300	508
AW 12a	421301	761

AW 22

Type	Art. No	Price
AW 22s	421303	602
AW 22a	421304	852
AW 22af	421305	1 858

AW 42

Type	Art. No	Price
AW 42s	421306	809
AW 42a	421307	1 112
AW 42af	421308	2 137

AW 62

Type	Art. No	Price
AW 62s	421309	1 119
AW 62a	421310	1 364
AW 62af	421311	2 461



AW

AW 12 - accessories

Type	Description	Art. No	Price
AWV 12	Wall brackets, pair	422045	51
AWT 12-22	Ceiling brackets, pair	422050	30
AWLH 12	Air deflector	422055	81
AWPF 12	Filter	422064	80
AWLA 12	Induction louvre	422080	158

AW 22 - accessories

Type	Description	Art. No	Price
AWV 22	Wall brackets, pair	422046	51
AWT 12-22	Ceiling brackets, pair	422050	30
AWLH 22	Air deflector	422056	87
AWB 22	Mixing section	421044	541
AWF 22	Filter (AWB and AWK)	421050	103
AWY 22	Outer wall grille	421060	197
AWK 22	Filter section	421071	278
AWPF 22	Filter	422065	86
AWBH	Manual operating handle for AWB	422015	64
AF 230	Damper actuator for AWB	104367	410
AWLA 22	Induction louvre	422081	162

AW 42 - accessories

Type	Description	Art. No	Price
AWV 42	Wall brackets, pair	422047	58
AWT 42-62	Ceiling brackets, pair	422051	35
AWLH 42	Air deflector	422057	122
AWB 42	Mixing section	421045	642
AWF 42	Filter (AWB and AWK)	421051	113
AWY 42	Outer wall grille	421061	248
AWK 42	Filter section	421072	351
AWPF 42	Filter	422066	98
AWBH	Manual operating handle for AWB	422015	64
AF 230	Damper actuator for AWB	104367	410
AWLA 42	Induction louvre	422082	203

AW 62 - accessories

Type	Description	Art. No	Price
AWV 62	Wall brackets, pair	422048	71
AWT 42-62	Ceiling brackets, pair	422051	35
AWLH 62	Air deflector	422058	163
AWB 62	Mixing section	421046	800
AWF 62	Filter (AWB and AWK)	421052	148
AWY 62	Outer wall grille	421062	332
AWK 62	Filter section	421073	384
AWPF 62	Filter	422067	132
AWBH	Manual operating handle for AWB	422015	64
AF 230	Damper actuator for AWB	104367	410
AWLA 62	Induction louvre	422083	237

CAW 11 - 41

Type	Art. No	Price
CAW 11s	421320	792
CAW 11a	421321	1 159
CAW 21s	421322	996
CAW 21a	421323	1 324
CAW 41s	421324	1 328
CAW 41a	421325	1 639

CAW 11-41 - accessories

Type	Description	Art. No	Price
CAWF11	Panel filter for CAW11	421053	80
CAWE11	Extension sleeve for CAW11	422025	78
CAWL11	Air deflector for CAW11	422060	116
CAWF21	Panel filter for CAW21	421054	86
CAWE21	Extension sleeve for CAW21	422026	89
CAWL21	Air deflector for CAW21	422061	121
CAWF41	Panel filter for CAW41	421055	98
CAWE41	Extension sleeve for CAW41	422027	128
CAWL41	Air deflector for CAW41	422062	132

Accessories for AW and CAW

Sensors for CAW-a, AW-a and AW-af

Type	Description	Art. No	Price
TG-R430	Room sensor / setpoint adjuster, IP30 (0-30°C)	101307	39
TG-R530	Room sensor, IP30 (0-30°C)	101308	26
TG-R630	Room sensor, IP54 (0-30°C)	101309	49



CAW

Switches and thermostats for CAW-s and AW

Type	Description	Art. No	Price
AWD	Operating switch, IP65	101253	445
AWC	Fan speed switch, IP65	101267	445
CAWC	Fan speed switch, IP65	101268	445
SR121/1	Room thermostat, IP54	101033	1 158
TI-N	Room thermostat, IP30	101010	257

Valve with actuators for CAW-s and AW-s

Type	Description	Art. No	Price
AWTV 12-22, IP20	for CAW-s 11, CAW-s 21, AW-s 12 and AW-s 22, IP20	422040	101
AWTV 42-62, IP20	for CAW-s 41, AW-s 42 and AW-s 62, IP20	422041	133
AWTV 12-22, IP54	for CAW-s 11, CAW-s 21, AW-s 12 and AW-s 22, IP54	422042	161
AWTV 42-62, IP54	for CAW-s 41, AW-s 42 and AW-s 62, IP54	422043	197

Dehumidifier - LAF

Dehumidifier LAF 10/30/50/100/150

Type	V	A (fuse)	Art. No.	Price
LAF 10	230V~	10	106007	256
LAF 30	230V~	10	602030	995
LAF 50S	230V~	10	601050	1 732
LAF 50ES	230V~	10	601051	1 771
LAF 50E2S	230V~	16	601052	1 907
LAF 100	230V~	10	601060	2 153
LAF 100E	230V~	16	601061	2 191
LAF 150	230V~	10	601070	2 880
LAF 150E	230V~	16	601071	2 919

Dehumidifier LAF 30/50/100/150 - accessories

Type	Description	Art. No.	Price
LAF-HY	Humidistats with cable connection	602010	191
LAF-W50	Wall brackets for LAF 50	602011	95
LAF-W100/150	Wall brackets for LAF 100-150	602012	111
LAF-P30	Collecting bowl with pump for LAF 30	602031	175
LAF-P50	Collecting bowl with pump for LAF 50	602013	359
LAF-P100/150	Collecting bowl with pump for LAF 100-150	602014	375
—	Running time meter, factory mounted	602015	88
—	Running time meter, not mounted	602016	59



LAF 50 / LAF 100



LAF 30



LAF 10

Terms of sales

General conditions:	Orgalime, S 2000.
Terms of delivery:	Incoterms EXW Hässleholm, Sweden, packing included.
Terms of payment:	Payment in advance. Currency, EUR.
Guarantee:	2 years from date of delivery. The guarantee includes spare parts only. Other costs such as labour costs are not included.
Changes:	We reserve us from typographical errors and the right to change prices and conditions as well as the technical specifications of the products without previous announcement.
Packing and packing waste:	The customer in the recipient country is responsible for the recycling of packaging and disposal of old electrical equipment in accordance with Directive 94/62/EC- Packing and Packing Waste and Directive 2002/96/EC Waste Electrical and Electronic Equipment (WEEE).

Delivered products remain in our possession until full payment has been settled.



VEAB Heat Tech AB
Box 265
SE-281 23 Hässleholm
SWEDEN

Visitors address
Stattenavägen 50
Delivery address
Ängdalavägen 4
281 33 Hässleholm

Org.No.
556138-3166
VAT.No.
SE556138316601

Postal Cheque Service
48 51 08-5
Bank Transfer Service
926-0365

Fax
Nat 0451-410 80
Int +46 451 410 80
veab@veab.com

Phone
Nat 0451-485 00
Int +46 451 485 00
www.veab.com